

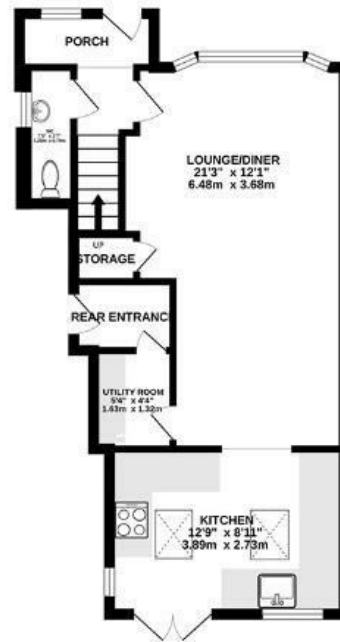
Headley Walk

HEADLEY PARK

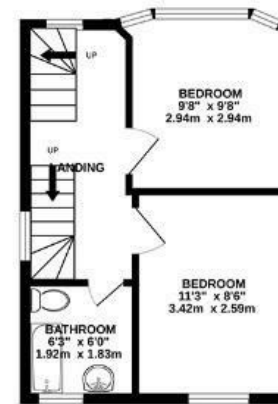
APPROXIMATE FLOOR AREA
96.4 SQM / 1037 SQFT



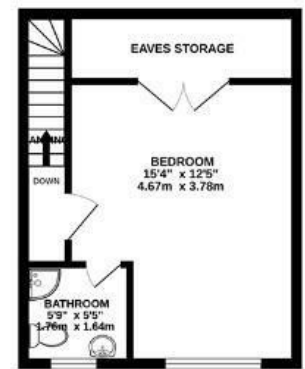
GROUND FLOOR



FIRST FLOOR



SECOND FLOOR



Boardwalk

Headley Walk

HEADLEY PARK, BRISTOL



£435,000



BS13 7NS



3 Bedrooms



2 Bathrooms

"We have renovated the property to a very high standard, aiming to keep the theme of other high quality homes in the area. Headley Park is also great for families, especially as many of our neighbours have built their lives here! Our tenants will definitely miss living here."

